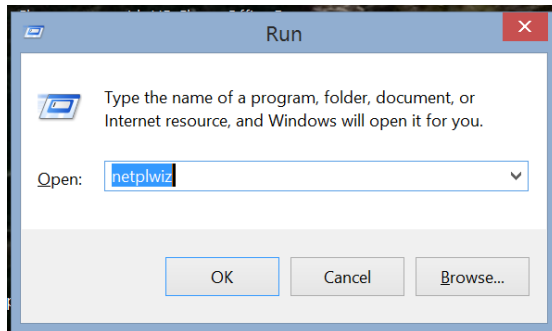
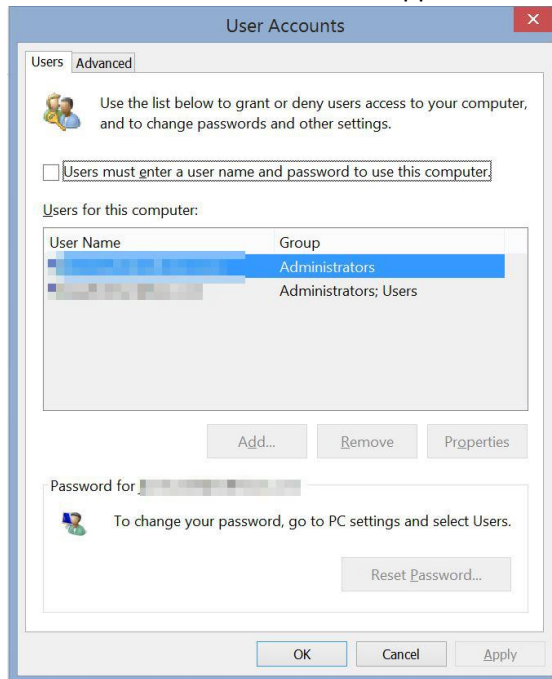


Configure your computer to Auto login:

1. Press the Windows Key plus the "R" key. A run prompt should appear. Erase whatever is there and type: **NETPLWIZ**



The **User Accounts** window will appear:



2. Uncheck **Users must enter a username and password to use this computer**
3. Click **OK** and the **Automatically sign in** window will appear.
4. Leave whatever is in the **User name:** field there and enter the password you use to log into the computer (confirming it on the **Confirm Password:** line)
5. Click **OK**

When you reboot your computer, it should automatically log in with your Microsoft Account