

# Installing Reed Third Floor Printer

Download the Bizhub 3850 driver here:

<http://onyxftp.mykonicaminolta.com/Downloadfile/Download.ashx?fileversionid=19375&productid=1707>

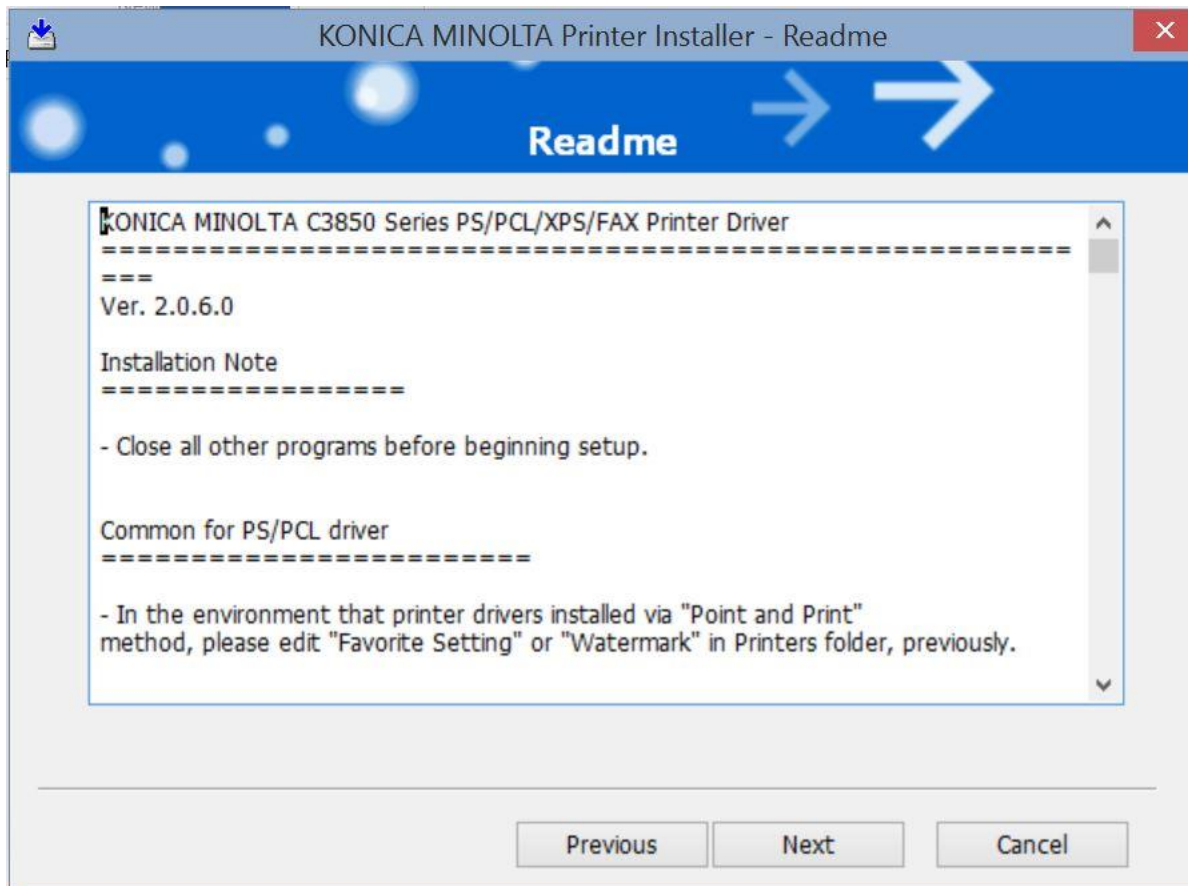
Right mouse-click on the file and select "extract all"

Accept the default location and click "Extract".

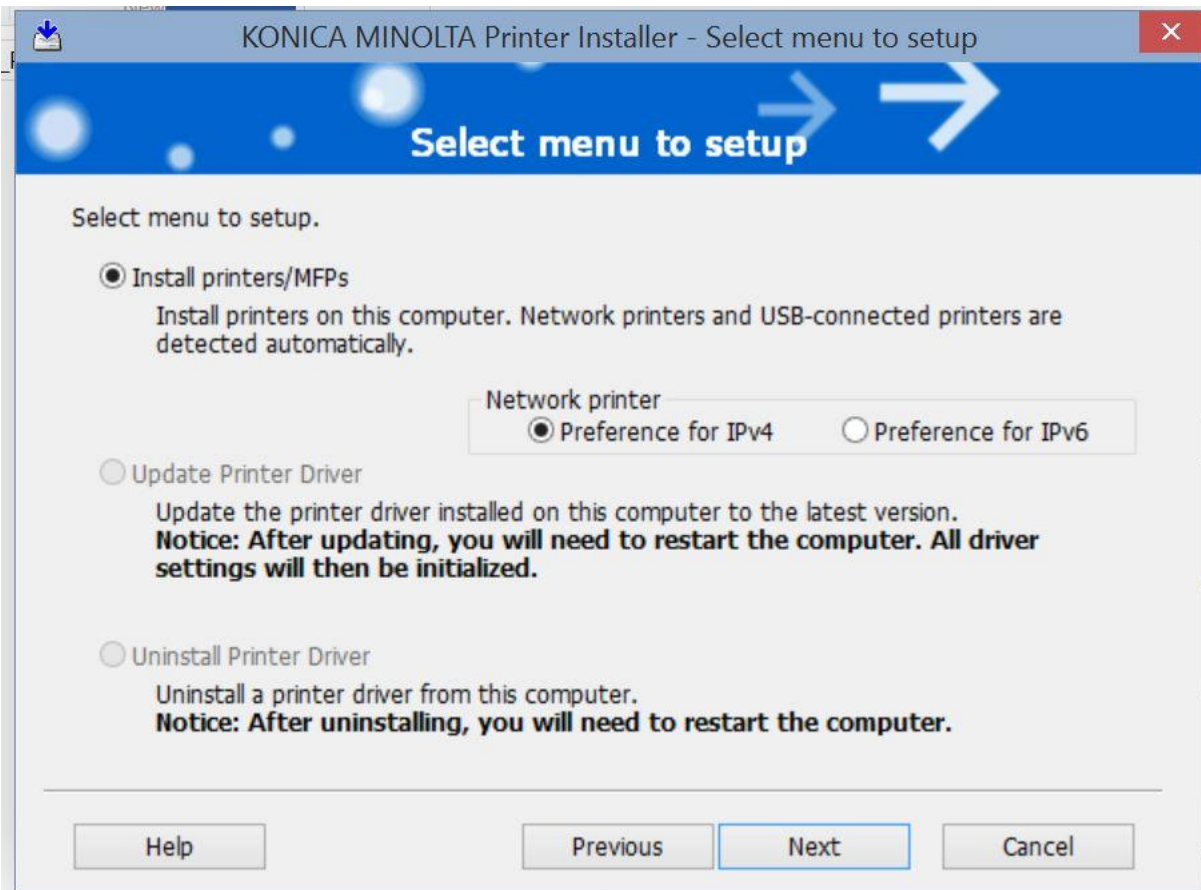
Double-click on the extracted folder and double-click on "Setup64.exe"

Accept the agreement





Click "next"



Click on "Next".

Click on "Specify the Printer/MFP Except for the Above (IP Address, Host Name...)"

The screenshot shows a window titled "KONICA MINOLTA Printer Installer - Select Printers/MFPs to Install". The window has a blue header with the text "Select Printer/MFP to Install" and two white arrows pointing right. Below the header, there are two radio button options. The first option is "Select Printers/MFPs to Install from the List. You Can Select Multiple Printers/MFPs." and is currently unselected. Below this option is a table with three columns: "Device Name", "Address/Port", and "Status". The table is currently empty. Below the table are four buttons: "Clear all", "Normal Printing" (with a dropdown arrow), "Search Setting", and "Update List". The second radio button option is "Specify the Printer/MFP Except for the Above. (IP Address, Host Name...)" and is currently selected. Below this option is a text input field with the placeholder text "Specify Printer/MFP Path Here" and a "Refer to..." button. At the bottom of the window, there are four buttons: "Help", "Previous", "Next", and "Cancel".

Select Printers/MFPs to Install from the List. You Can Select Multiple Printers/MFPs.

Device Name	Address/Port	Status
-------------	--------------	--------

< [Progress Bar] >

Clear all   Normal Printing ▾   Search Setting   Update List

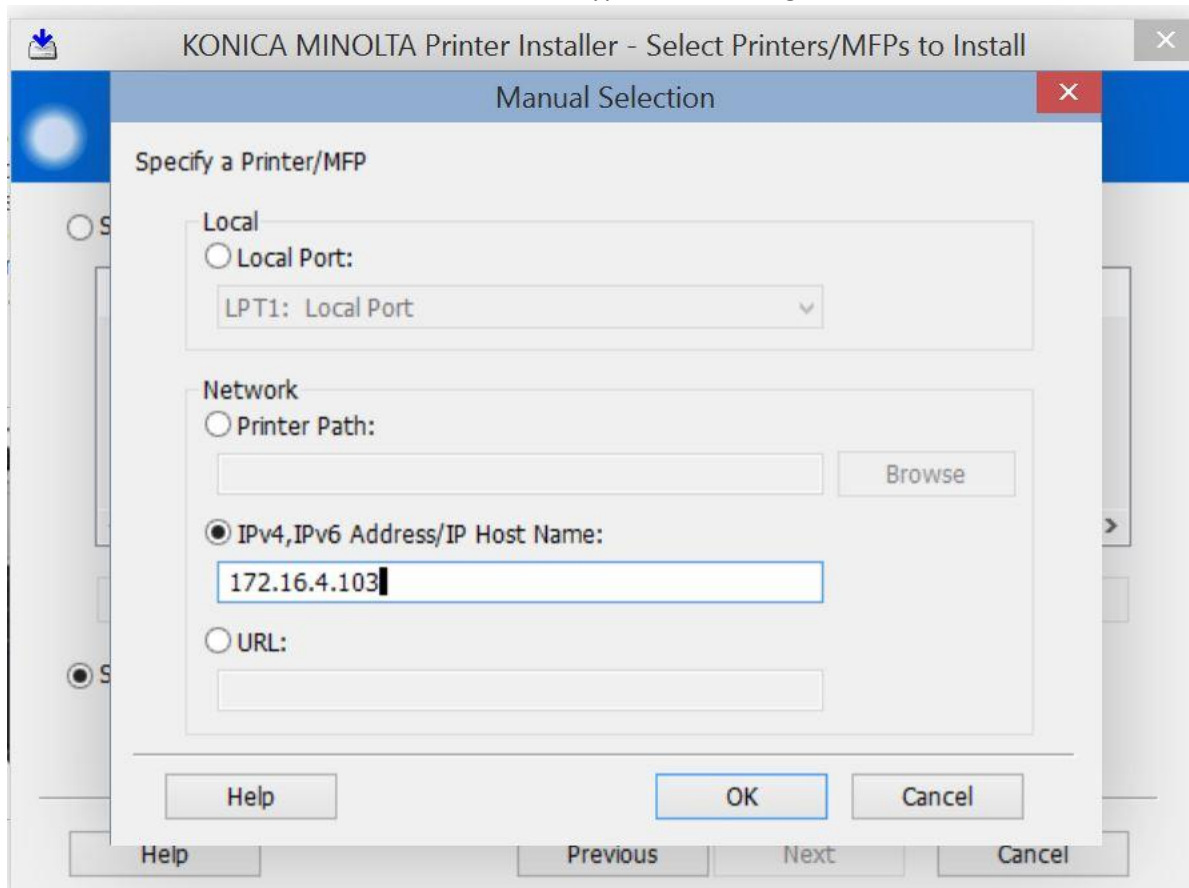
Specify the Printer/MFP Except for the Above. (IP Address, Host Name...)

Specify Printer/MFP Path Here   Refer to...

Help   Previous   Next   Cancel

Click on "Refer to"

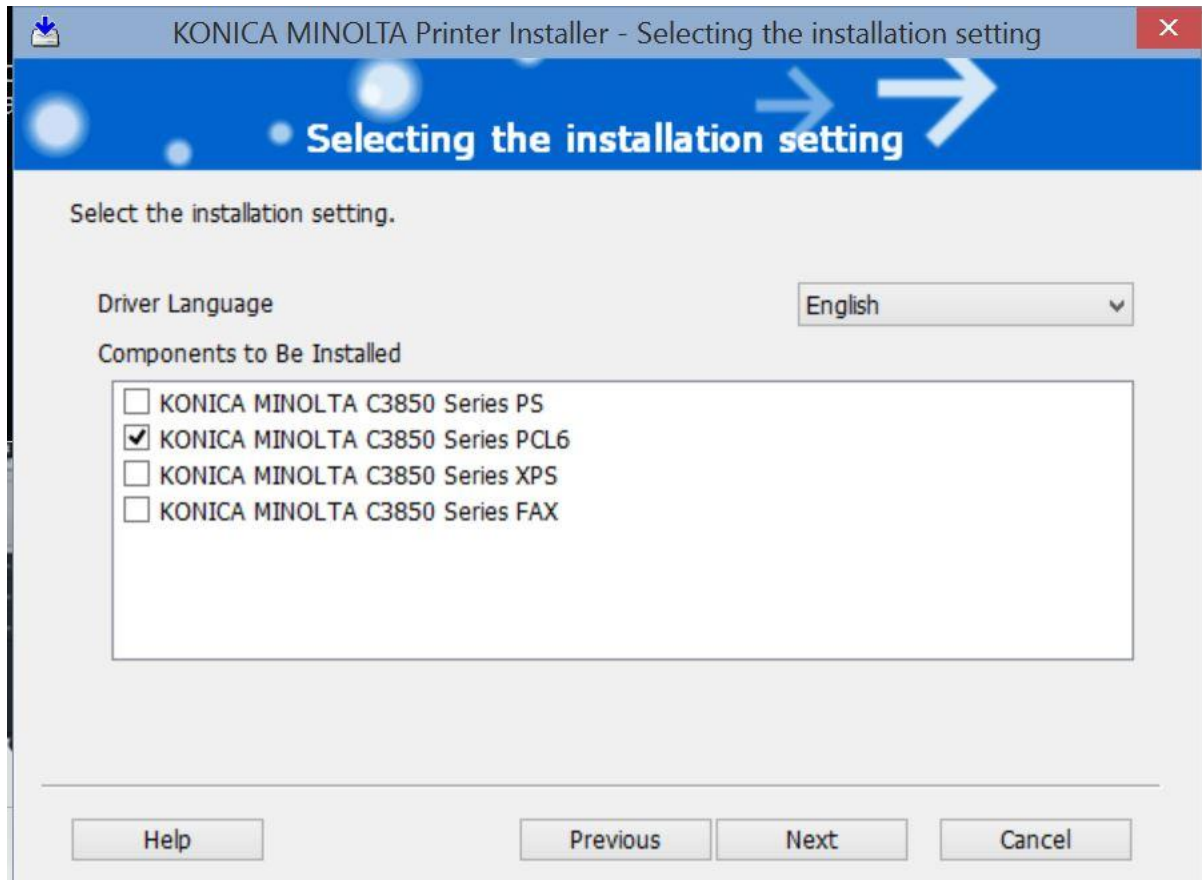
Click on “IPv4,IPv6 Address/IP Host Name:” and type the following: 172.16.4.103



Click on “Ok”

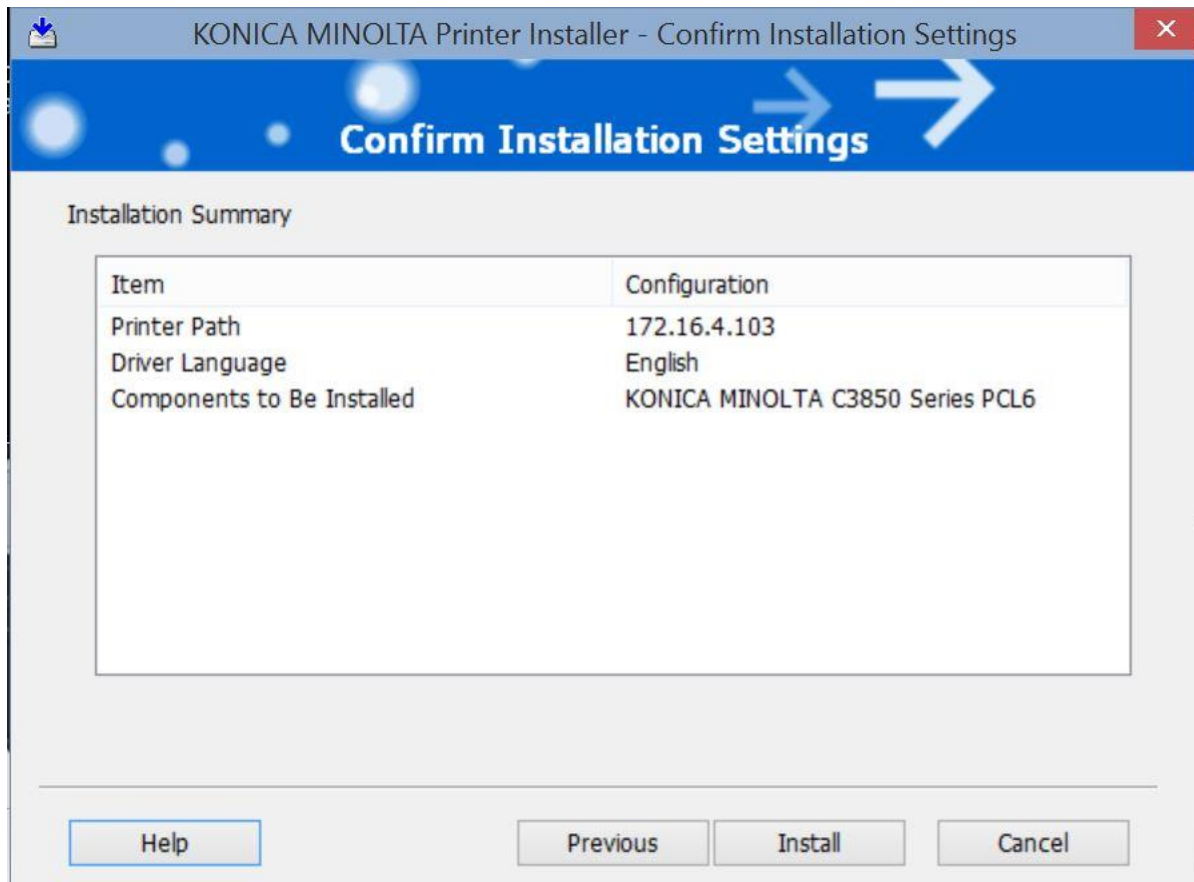
Click on “next”

Uncheck "Konica Minolta C3850 Series PS" and make sure "KONICA MINOLTA C3850 Series PCL6" is checked



Click on "Next"

Click on "Install"



Click on "Finish"

